

Sight glass - Tubular type

with Safety Seal-System, acc. to DIN 28121



Bauform 25

Application:

Sightglass - Tubular type with flanges on both sides, to use in either horizontal or vertical pipe lines for optical control of fluids and gasses.

Operating conditions:

Connection: Flanges PN 10/16
Pressure: up to DN 100 - 6 bar max
from DN 125 - 4 bar max
Temperature: 200°C max.

Materials:

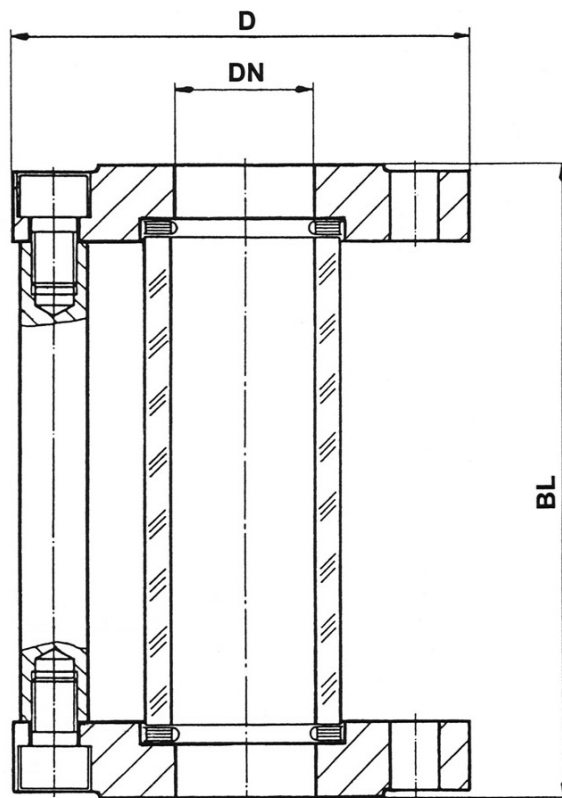
- | | | |
|-------------------|----------------------------|------------|
| 1. Flanges: | WN 1.4571 | Steel H II |
| 2. Distance-Bars: | WN 1.4571 | Steel |
| 5. Screws: | A4-70 | Steel |
| 3. Glass tube: | Borosilicate glass (DURAN) | |
| 4. Gaskets: | PTFE covered | |

Special designs:

Extra length
Flanges acc. to ANSI
Protection jacket of acrylic glass

Mounting instructions:

Sight glass tubular type must be mounted without tension by tube, vibrations and pressure pushes.

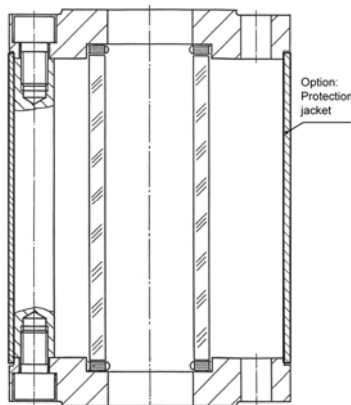


Dimensions:

DN	D	BL
25	115	160
40	150	200
50	165	230
80	200	310
100	220	350
125	250	400
150	285	480



(Picture with Plexi-jacket)



Modifications reserved



AVEMAR cz s.r.o., Lihovarská 10, 716 03 Ostrava - Radvanice
Tel.: +420 596 232 996, 596 232 997, Fax: +420 596 232 998
E-mail: avemar@avemar.cz, web: www.avemar.cz