

Sight glass - Tubular type

with flanged connection acc. to DIN



Bauform 20

Application:

Sightglass - Tubular type with flanges on both sides, to use in either horizontal or vertical pipe lines for optical control of fluids and gasses.

Operating conditions:

Connection: Flanges PN 10 / 16
 Pressure: up to DN 100 - 6 bar max
 from DN 125 - 4 bar max
 Temperature: 200°C max.

Materials:

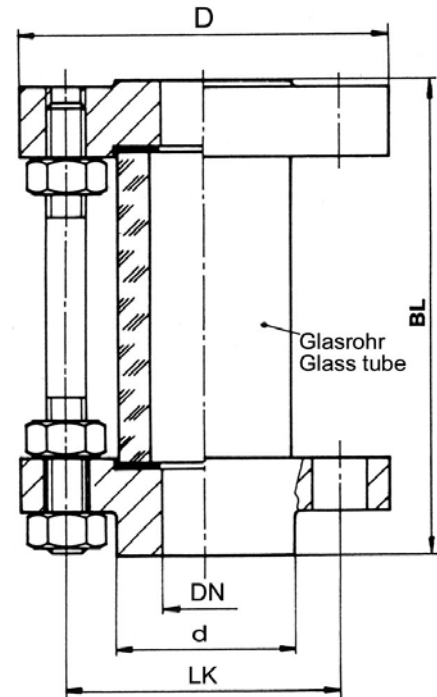
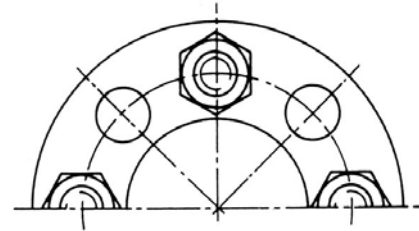
Flanges: WN 1.4571 | Steel H II
 Screws: A4 - 70 | Steel
 Glass tube: Borosilicate glass (DURAN)
 Gaskets: Viton or PTFE

Spezial designs:

Protection jacket of acrylic glass
 ANSI - Flanges
 Extra length

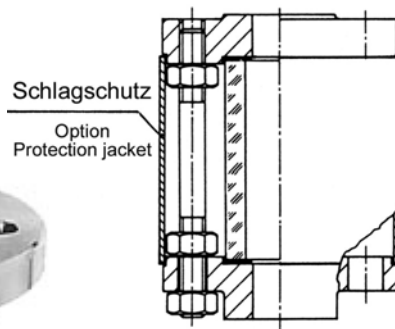
Example for an order:

Sight Glass - Tubular Type Bauform 20
 WN 1.4571, Gaskets PTFE
 DN 50, PN 16; 6 bar max.



Mounting instructions:

Sight glass tubular type must be mounted without tension by tube, vibrations and pressure pushes.



Dimensions:

DN	D	d	BL	Screws	LK
15	95	45	200	4	65
20	105	58	200	4	75
25	115	68	200	4	85
32	140	78	200	4	100
40	150	88	200	4	110
50	165	102	200	4	125
65	185	122	200	4	145
80	200	138	200	8	160
100	220	158	200	8	180
125	250	188	200	8	210
150	285	212	200	8	240
200	340	242	200	8	295

Modifications reserved



AVEMAR CZECH s.r.o. | speciální armatury pro měření a regulaci |
 Branch office | Podvihovská 378/12C | 747 70 Opava 9 - Komárov | Česká republika |
 Tel.: +420 553 764 015 | Fax: +420 553 654 820 | www.avemar.cz | avemar@avemar.cz |