

Glass Tube Liquid Level Gauge PN 25

Type 700.01

Applications

Direct reading liquid level indicator with glass tube for general applications up to CL 150. Increased safety with ball check-valves and glass protection.

Special Features

- Connection top - bottom pivoted
- Offset, handwheel
- Glass protection

General Data

Visible length SL	ME – 130 mm from 1500 mm and up every 1000 mm glass-holder in-between
Process connection	union, flange
Gauge valve types	s. data sheet 760.01
Actuation	handwheel
Material glass tube	Borosilicate
Material media wetted parts	CS, SS
Material glass protection device	Acrylicglass / SS
Material sealing glass tube	Viton

Types with special materials e.g. Hastelloy, Monel etc. are available.

Weight

- | | |
|--------------------------------------|--------|
| - basic weight for ME ≤ 1500 mm | 3,6 kg |
| - basic weight for ME > 1500 mm | 4,9 kg |
| - + weight / m | 0,2 kg |
| - weight glass protection device / m | 0,2 kg |

Design Data

Design pressure /temperature – 20...+ 200°C / 0...25 bar

Further Data

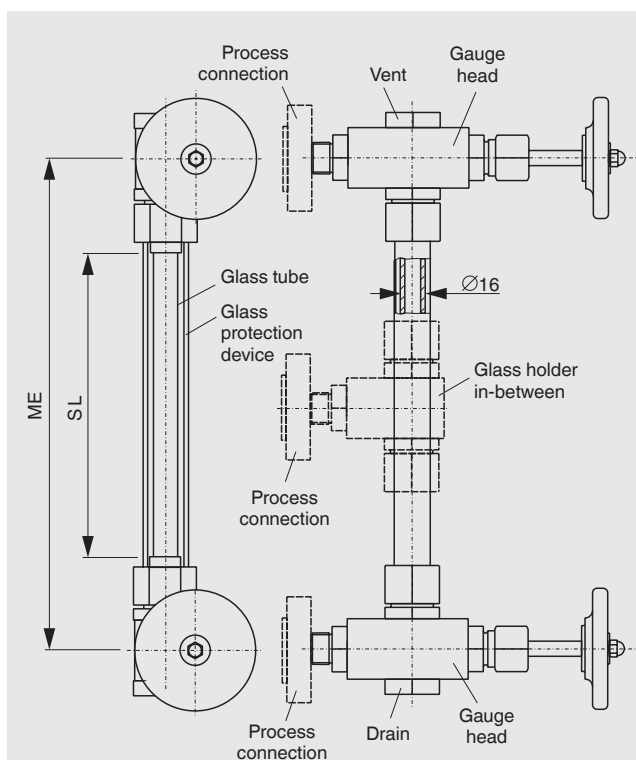
Process connection	see Connections
Vent	see Connections
Drain	see Connections

Accessories

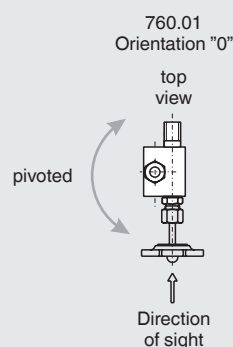
Scale see Accessories

Spare parts

Glasstube length = ME – 40



Orientation of gauge valve and operation



CS (= carbonsteel) and SS (= stainless steel type 316SS) are materials suitable for Pressure Vessels according to EN or ASME.